

3.6 TYPICAL DETAILS

The principles of detail design described above are further illustrated in the following section in the form of typical details for warm roof constructions.

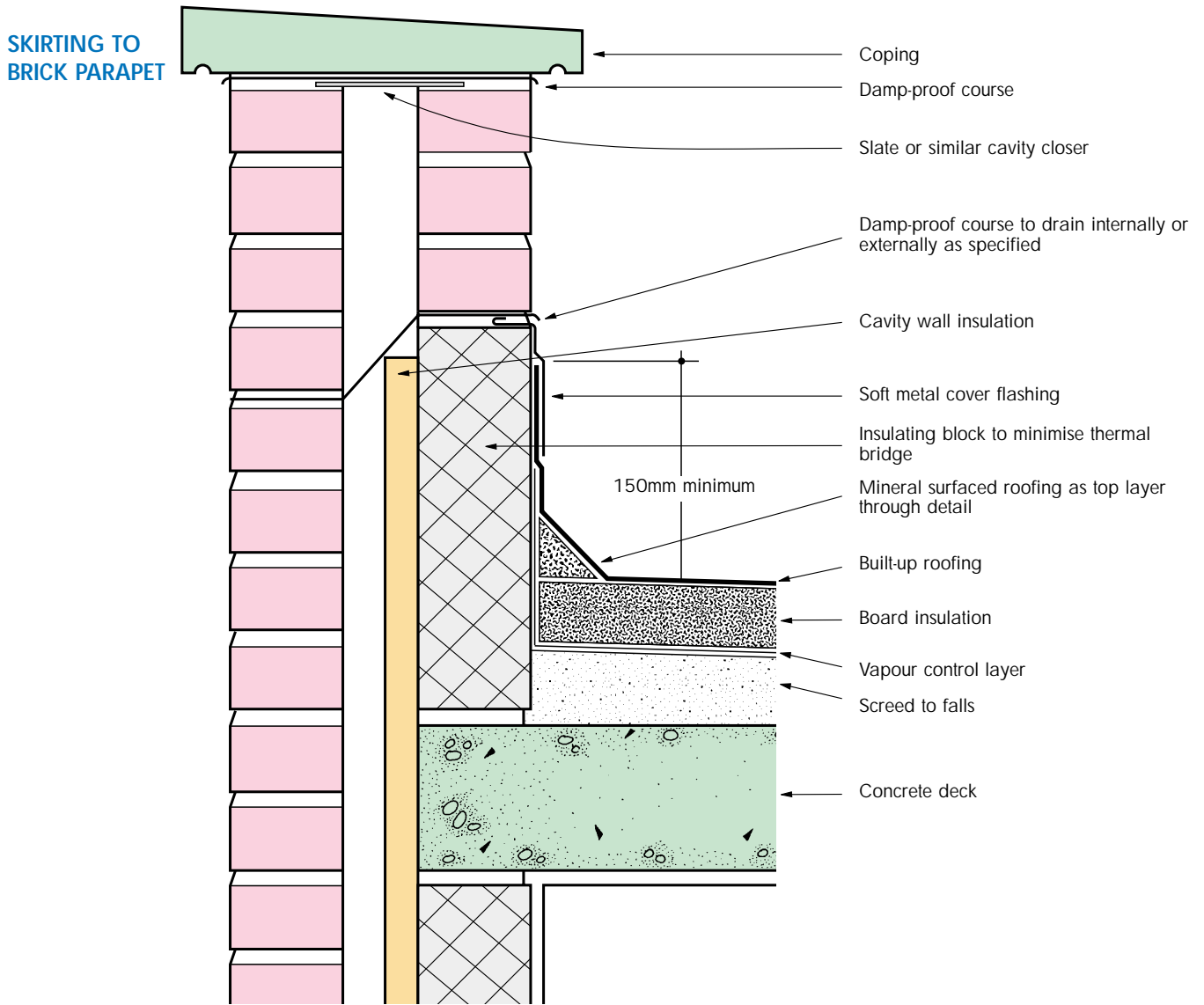
The details are grouped according to the structural deck material.

Details illustrated for plywood deck construction are equally applicable to particleboard and timber boarded decks.

In all cases, typical adjacent structures have been included to enable the principles of detailing and waterproofing to be shown, but it is not intended to illustrate details of building construction.

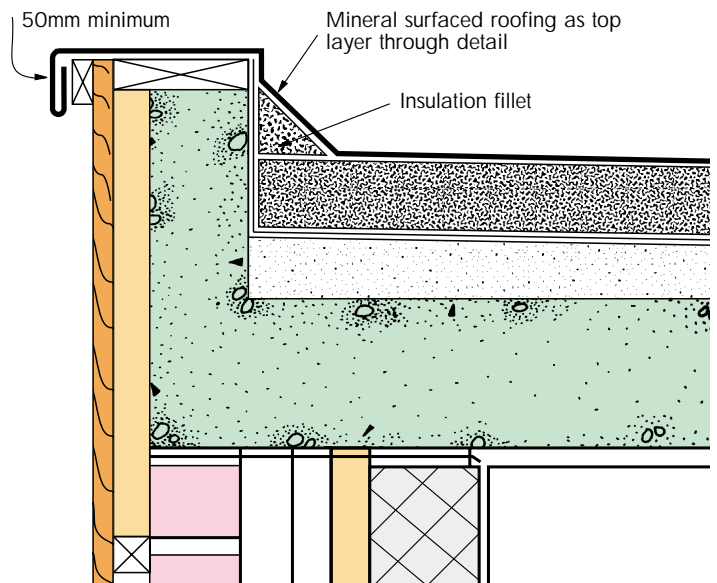
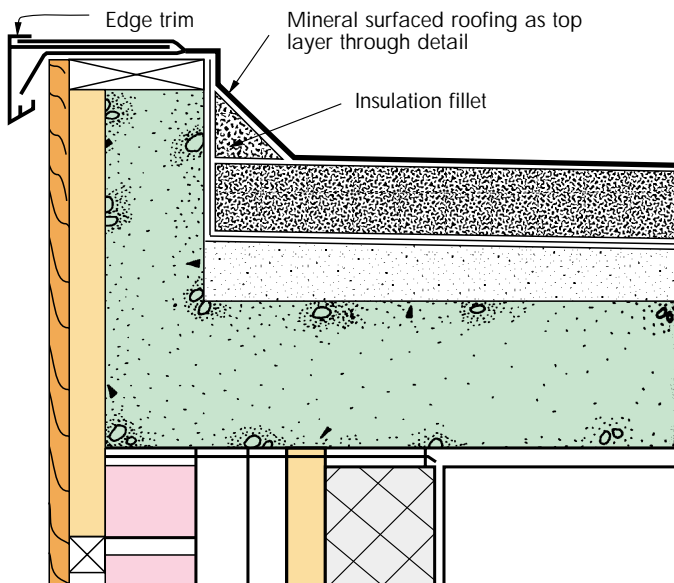


BUILT-UP ROOFING CONCRETE DECK



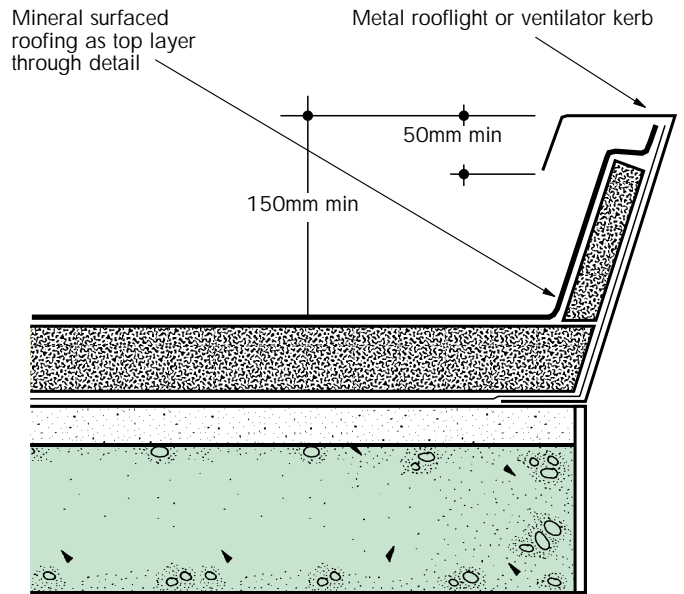
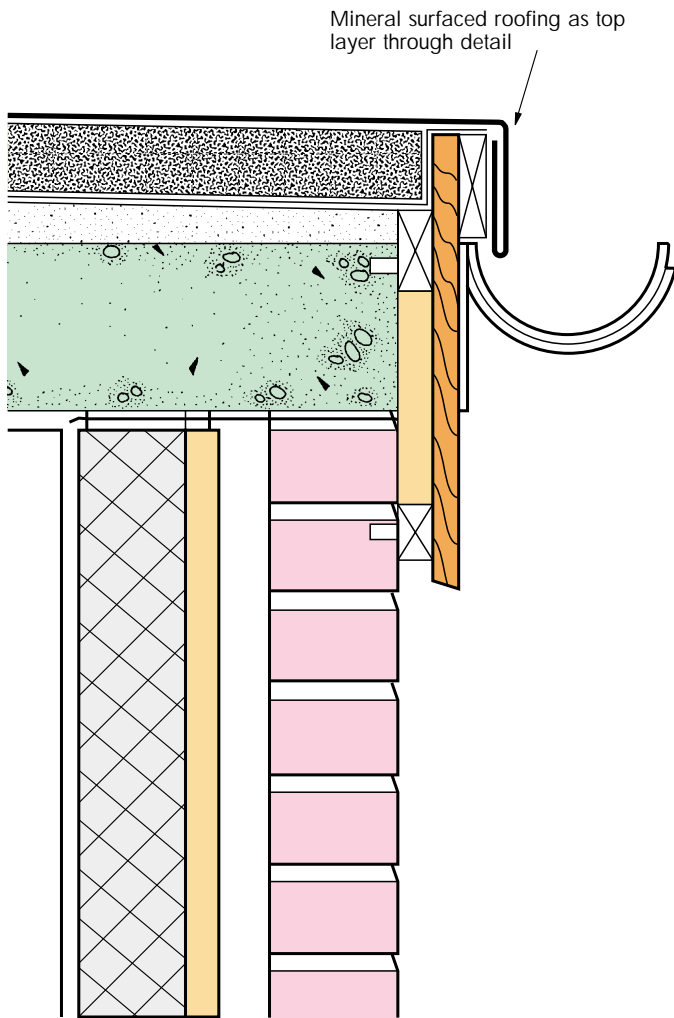
CHECK KERB AND METAL TRIM EDGE

CHECK KERB AND WELTED DRIP

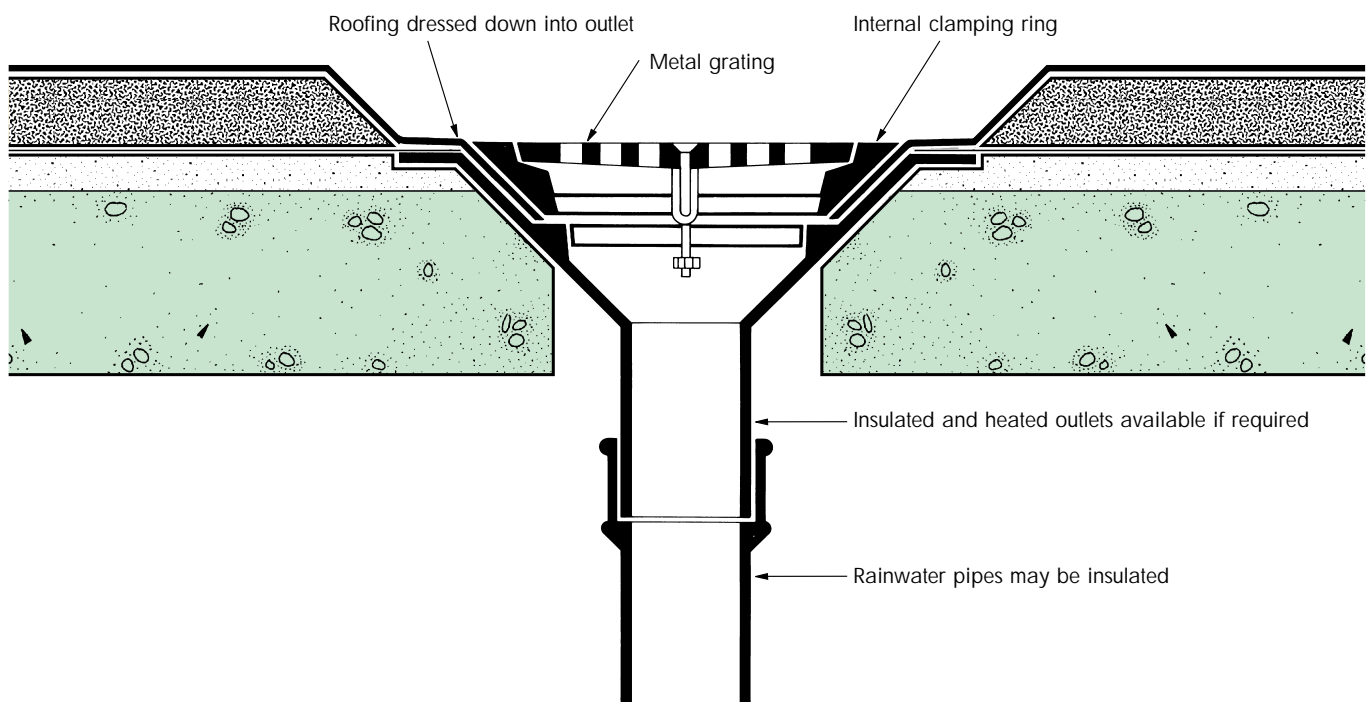


WELTED DRIP TO EXTERNAL GUTTER

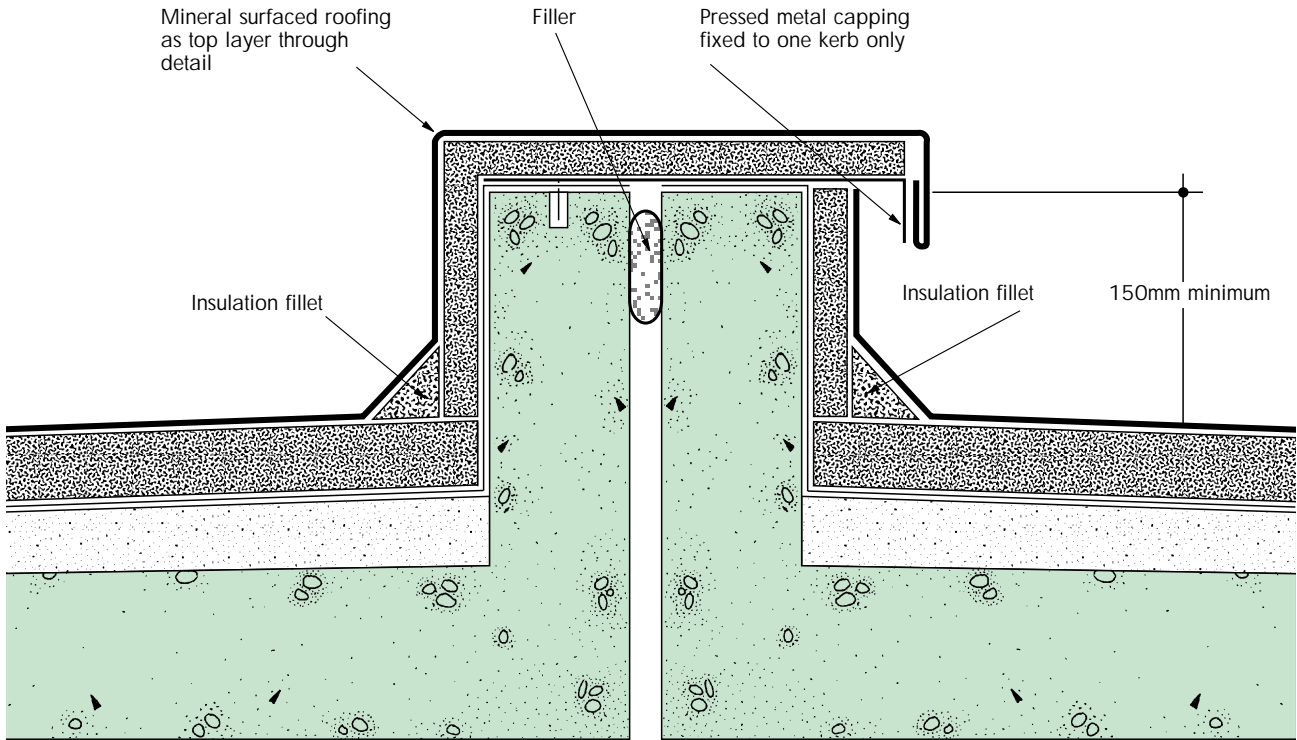
SKIRTING TO METAL ROOFLIGHT OR VENTILATOR KERB



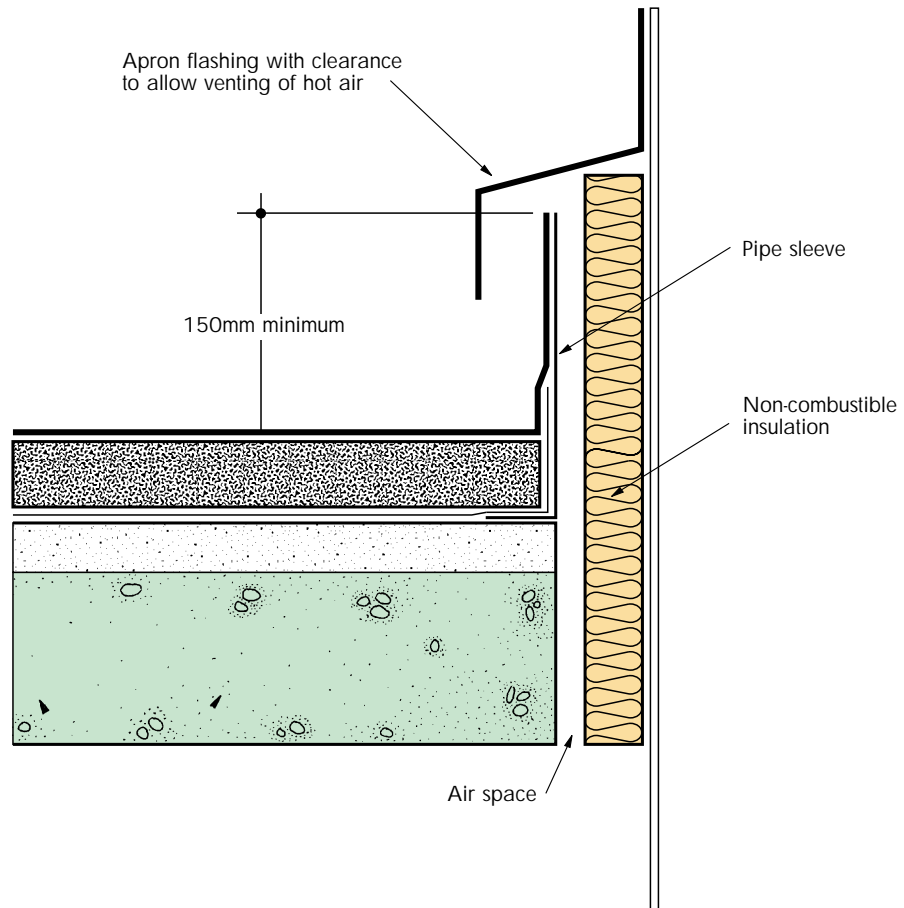
ROOF OUTLET: CLAMPING RING TYPE



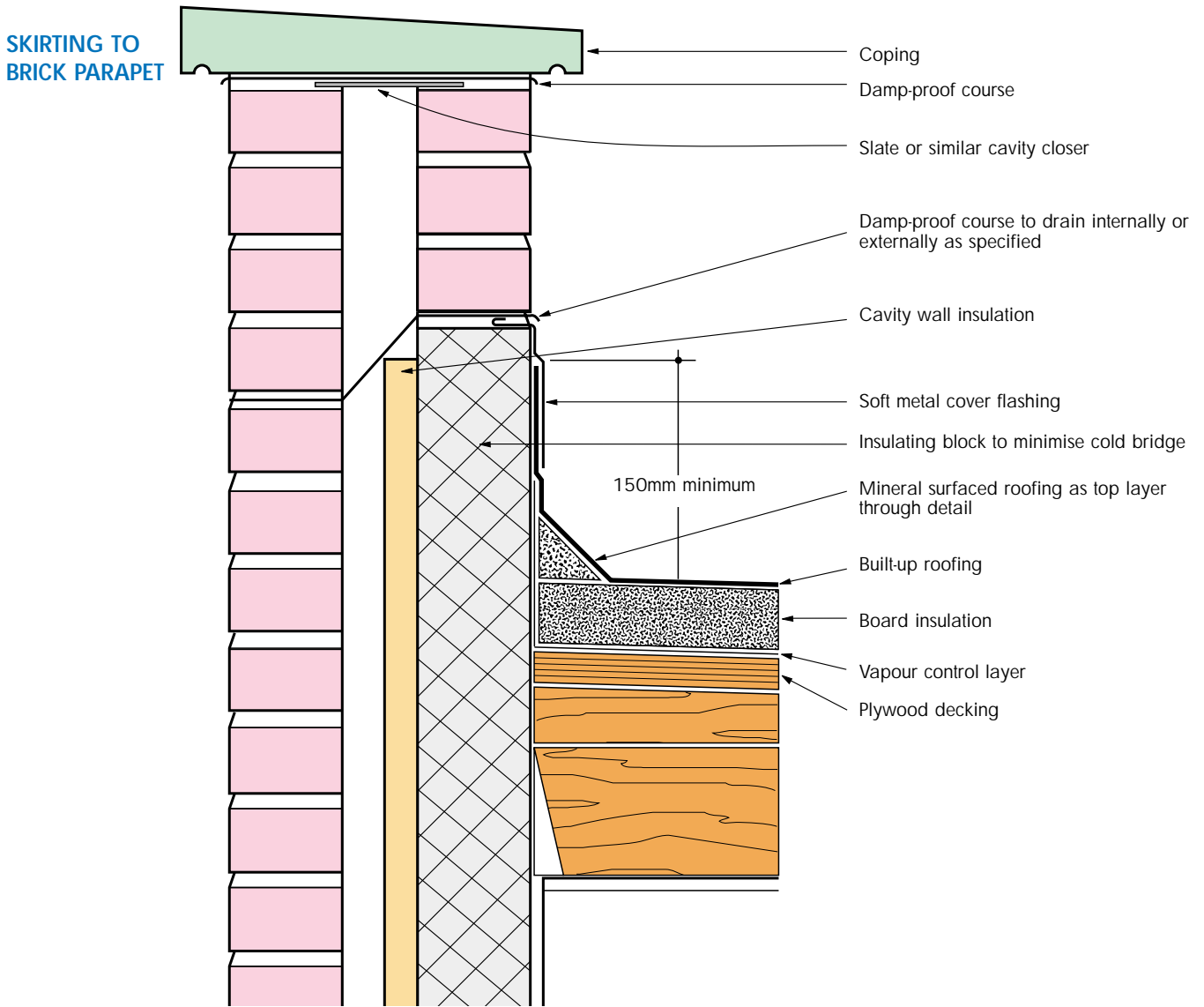
TWIN-KERB EXPANSION JOINT



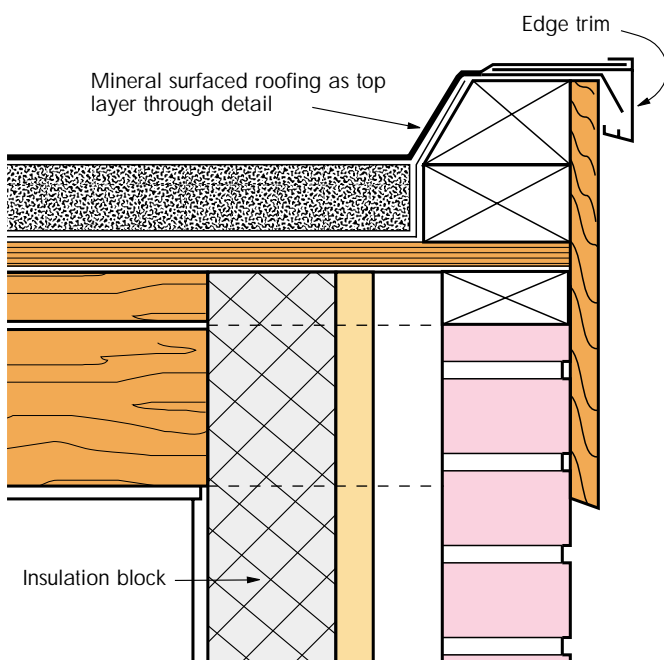
SKIRTING TO HOT PIPE



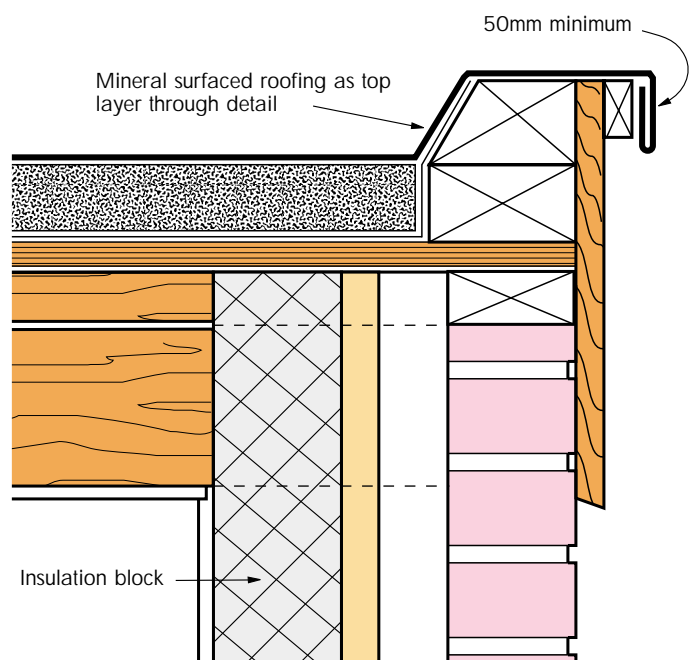
BUILT-UP ROOFING TIMBER DECK



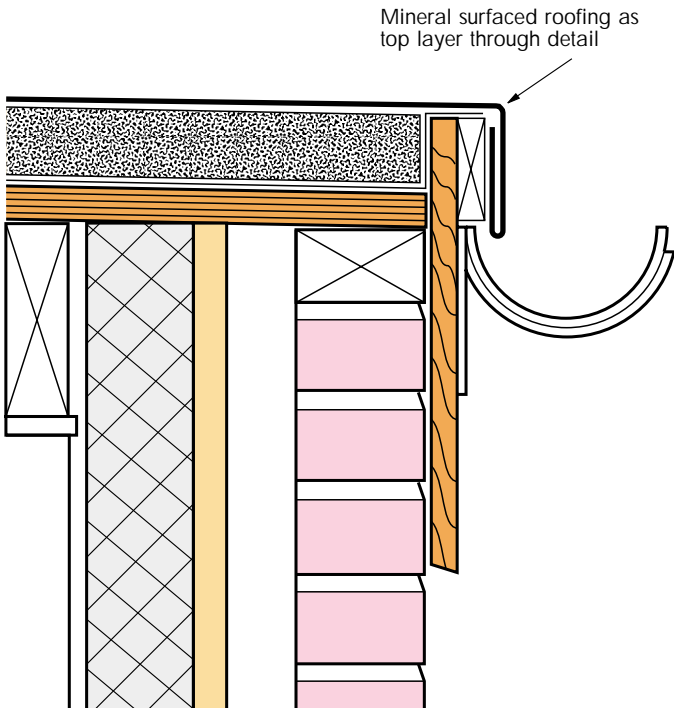
CHECK KERB AND METAL TRIM EDGE



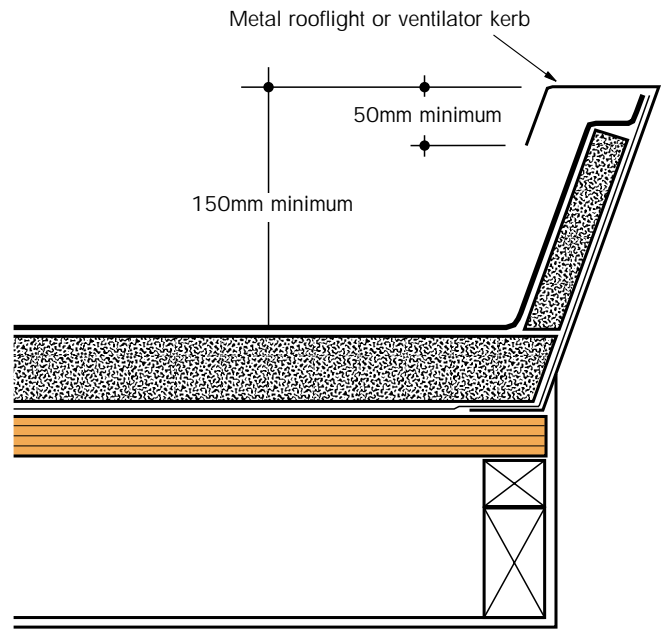
CHECK KERB AND WELTED DRIP



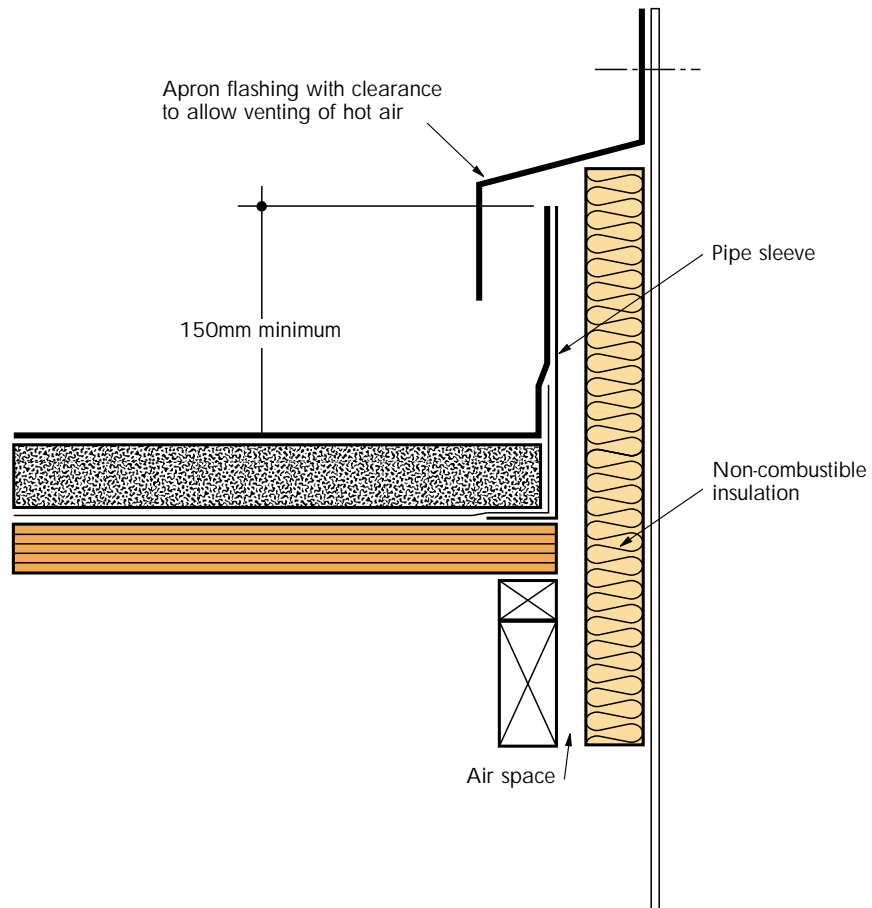
WELTED DRIP TO EXTERNAL GUTTER



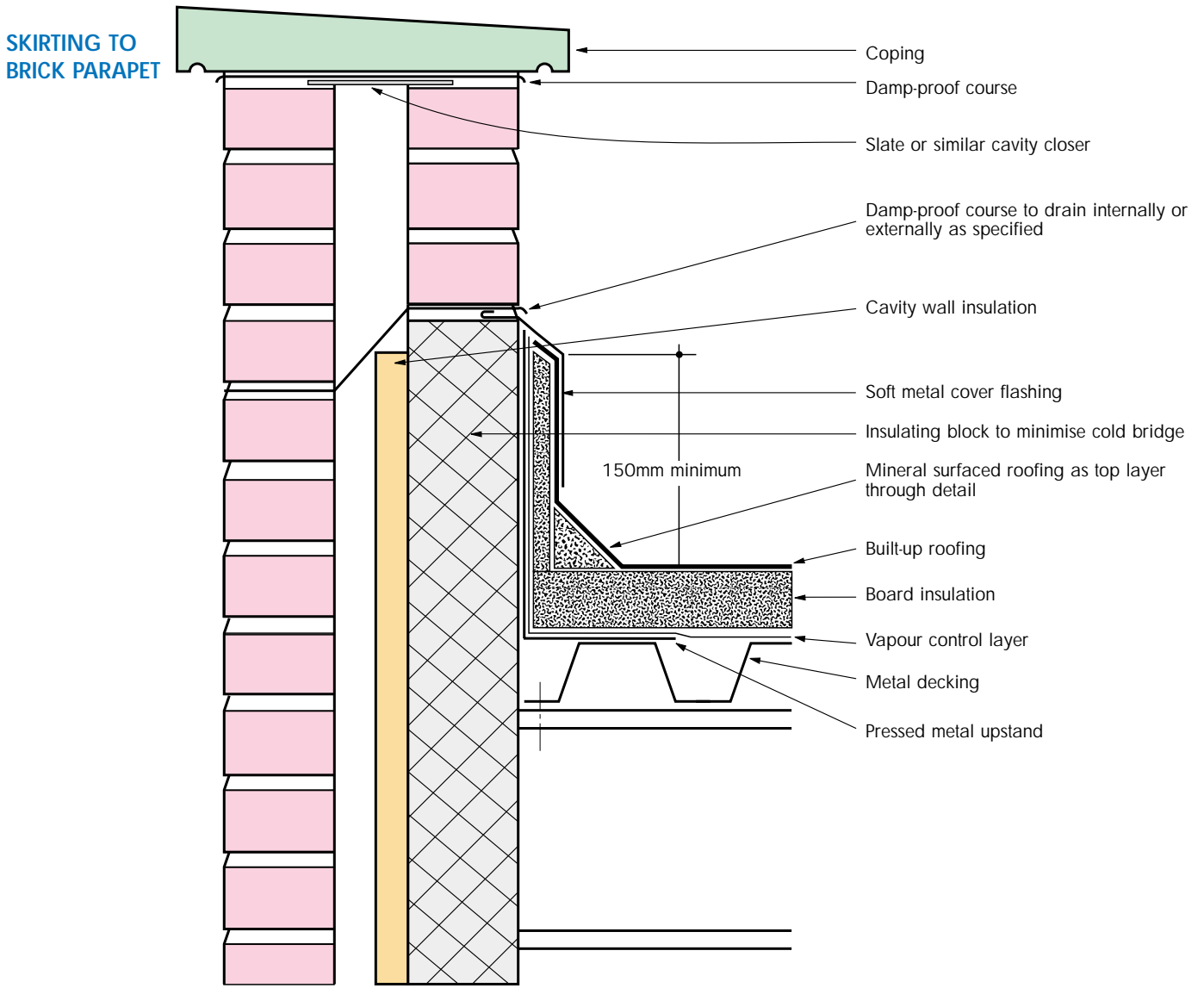
SKIRTING TO METAL ROOFLIGHT OR VENTILATOR KERB



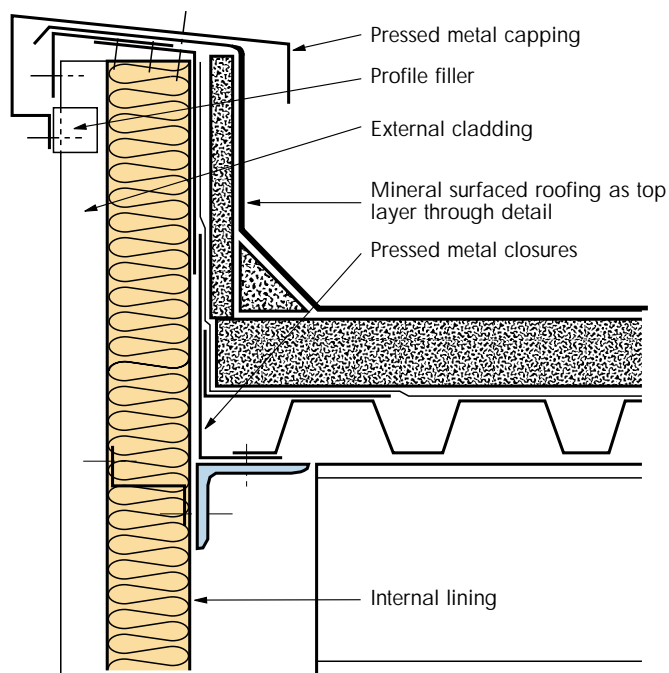
SKIRTING TO HOT PIPE



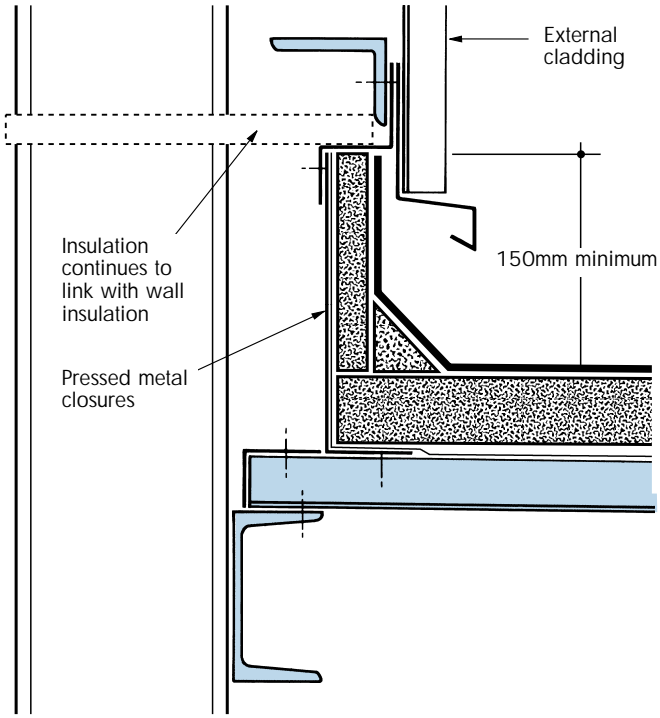
BUILT-UP ROOFING METAL DECKING



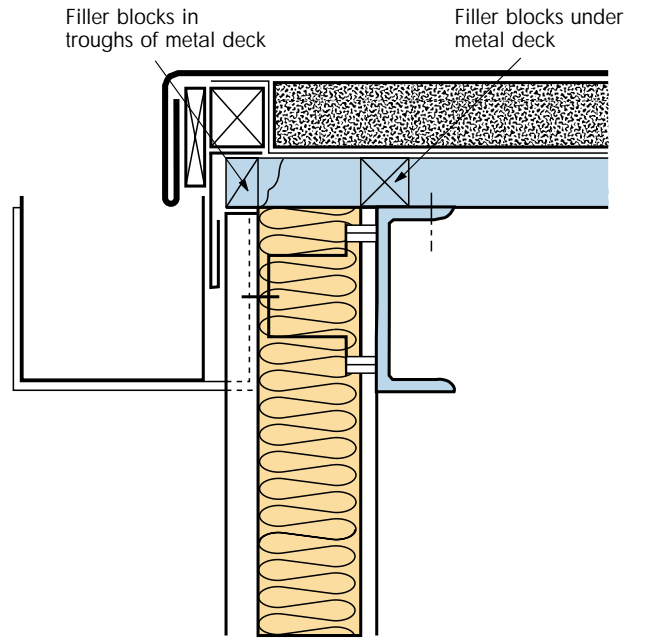
SKIRTING TO CLADDING PARAPET



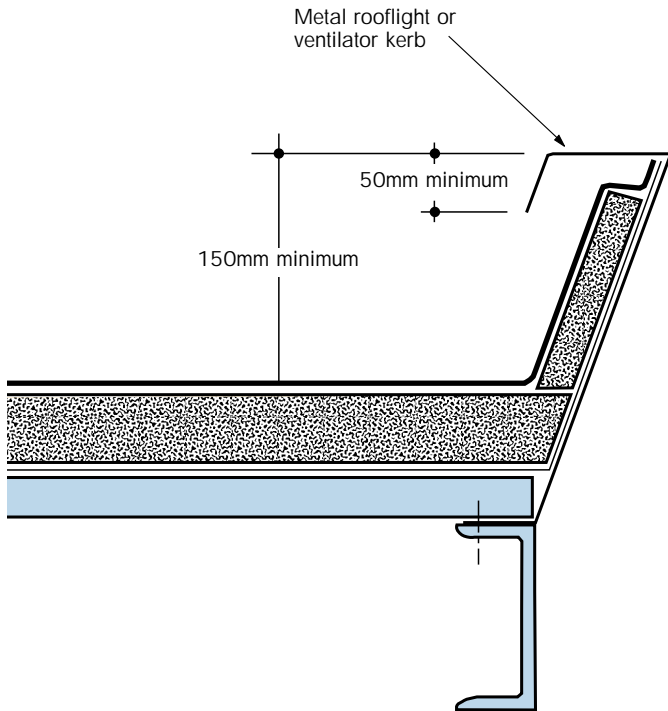
SKIRTING TO CLADDING ABUTMENT



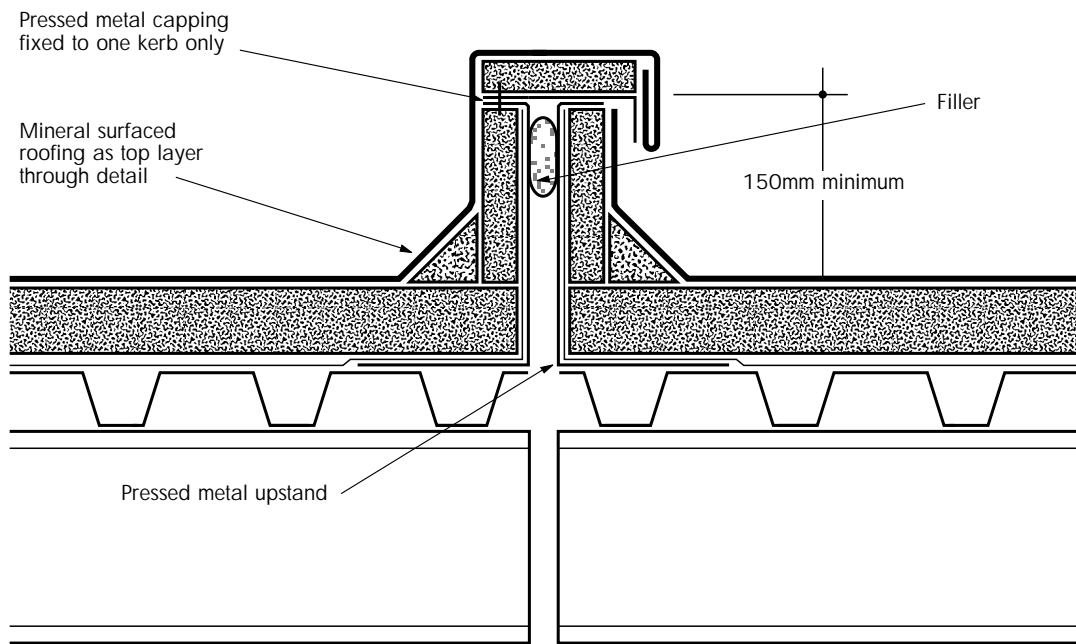
METAL CHECK KERB



SKIRTING TO METAL ROOFLIGHT OR VENTILATOR KERB



TWIN KERB EXPANSION JOINT



SKIRTING TO HOT PIPE

